

Headquarters Stock Code : **300014.SZ**



EVE ENERGY STORAGE PRODUCT SOLUTIONS



EVE Energy Co., Ltd (Headquarters)

Address : No.38, Huifeng 7th Road, Zhongkai Hi-Tech Zone, HuiZhou, Guangdong.
Contact : +86-752-2630809
Website : www.evebattery.com

Follow EVE Energy



EVE Energy Storage Co., Ltd

Address : No.77, Optics Valley Avenue, East-lake Hi-Tech Development Zone, Wuhan, Hubei
Contact : +86-027-65523957
Website : www.evebattery.com

Follow EVE Energy Storage

Disclaimer :


Due to the continuous upgrading of products, please refer to the actual product information involved in this catalogue, we reserve the right to update or modify the data and other information at any time.
The final interpretation right belongs to EVE Energy Storage.

Credible, reliable and harmonious development



TO BECOME A GLOBAL LEADER IN
ENERGY STORAGE BATTERY
AND MAKE SIGNIFICANT CONTRIBUTIONS TO
THE NEW ENERGY INDUSTRY
FOR HUMANITY

CONTENT



-  **01**
EVE Energy Storage
- 02**
Business Layout
- 03**
Product Solutions
- 04**
Application Cases



EVE Energy Storage Co., Ltd. is a wholly-owned subsidiary of EVE Energy Co., Ltd. (stock code: 300014). It has a leading technology and comprehensive cost advantage of the battery platform to serve the global energy storage market with core technologies for battery cell development and system integration as well as professional verification and testing capabilities.

Products cover full-product solutions from cell, pack, system and BMS, which have been widely used in international and domestic Utility ESS, Telecom ESS, Household ESS, Marine Power.



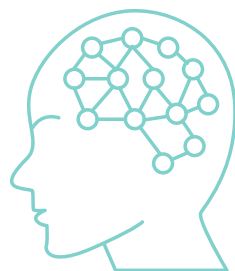
STRONG R&D TEAM

Internationalization

To challenge essential problems of fundamental science and engineering application with global experts

Systematization

A full coverage of core technical routes of lithium battery, dominating and participating in national/industrial standard's setting



To challenge essential problems of fundamental science and engineering application with global experts.

ADVANCED MANUFACTURING TECHNOLOGY

Efficient Intelligent Factory

Highly automated production configuration

Informational Quality Control

More than 2856 production in charge and traceability system, comprehensive information monitoring process quality



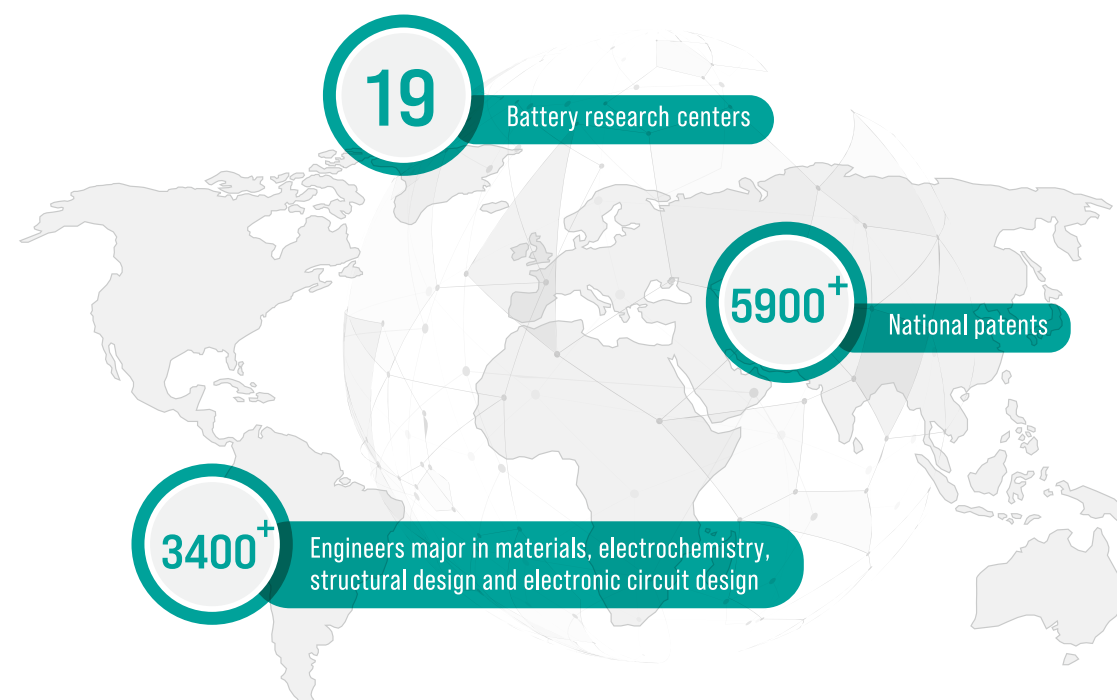
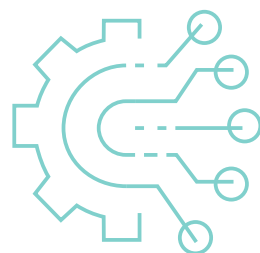
COMPREHENSIVE SOLUTIONS

CELL

MODULE

SYSTEM

BMS (Battery Management System)





R & D INVESTMENT

Continuous high R&D investment, committed to being the most creative lithium battery leading company

3400+ | The institute exceeds 3,400 people and it has an international and systematic R&D team

19 | 19 major battery research institutes

950+ | More than 950 sets of high-end precision equipment, covering electrochemical performance test, safety performance test, environmental adaptability test, material analysis test and reliability test



ACHIEVEMENTS |

A full coverage of core technical routes of lithium battery, dominating and participating in national/industrial standards' setting

Patents | EVE owns more than **5900** national patents

Industry Standard | Participate in more than **90** items of industry standard formulation and modification

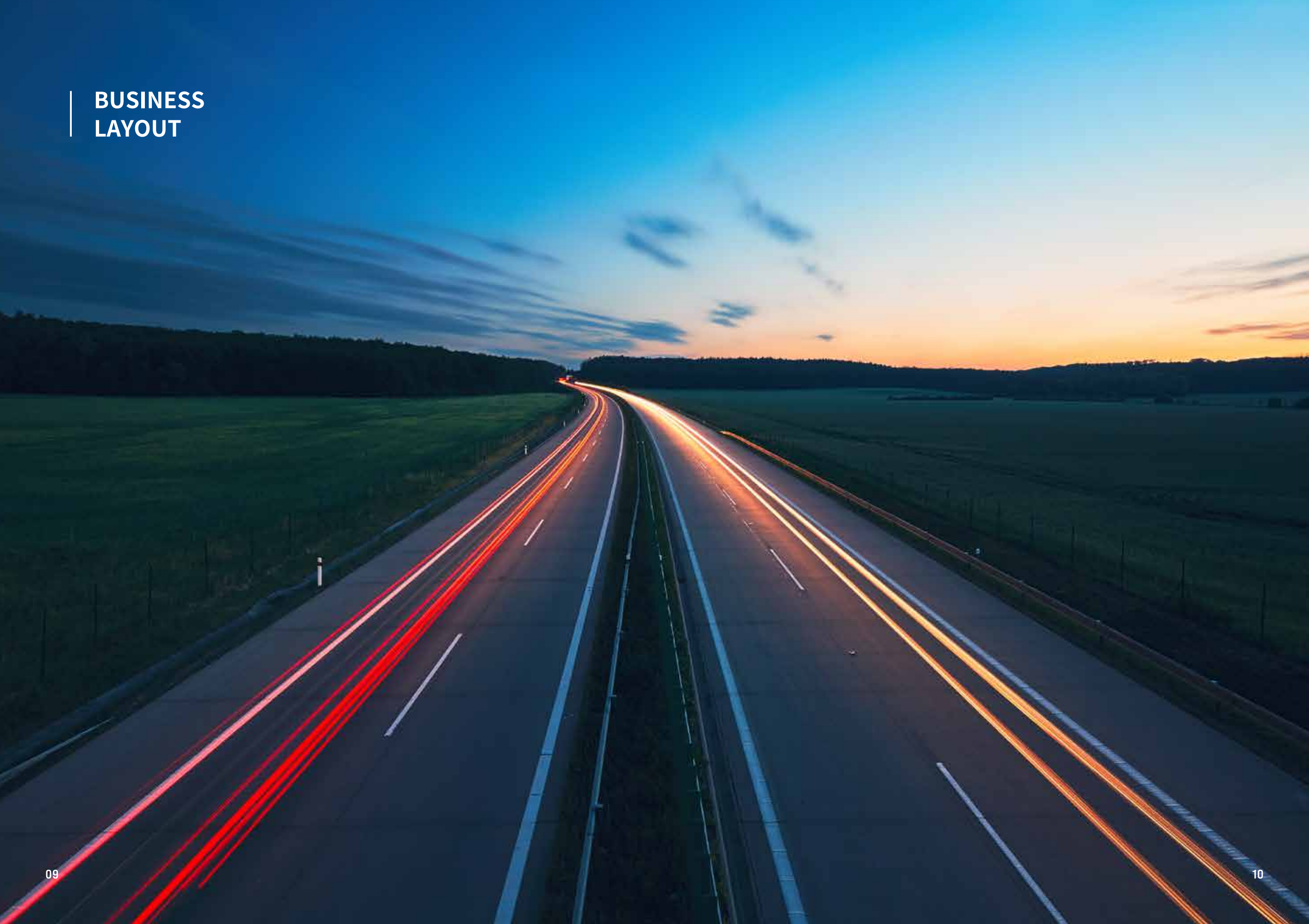
National Platform | Post-doctoral Program
National recognized enterprise technology center
National and local joint engineering research center for key technology and materials of lithium battery



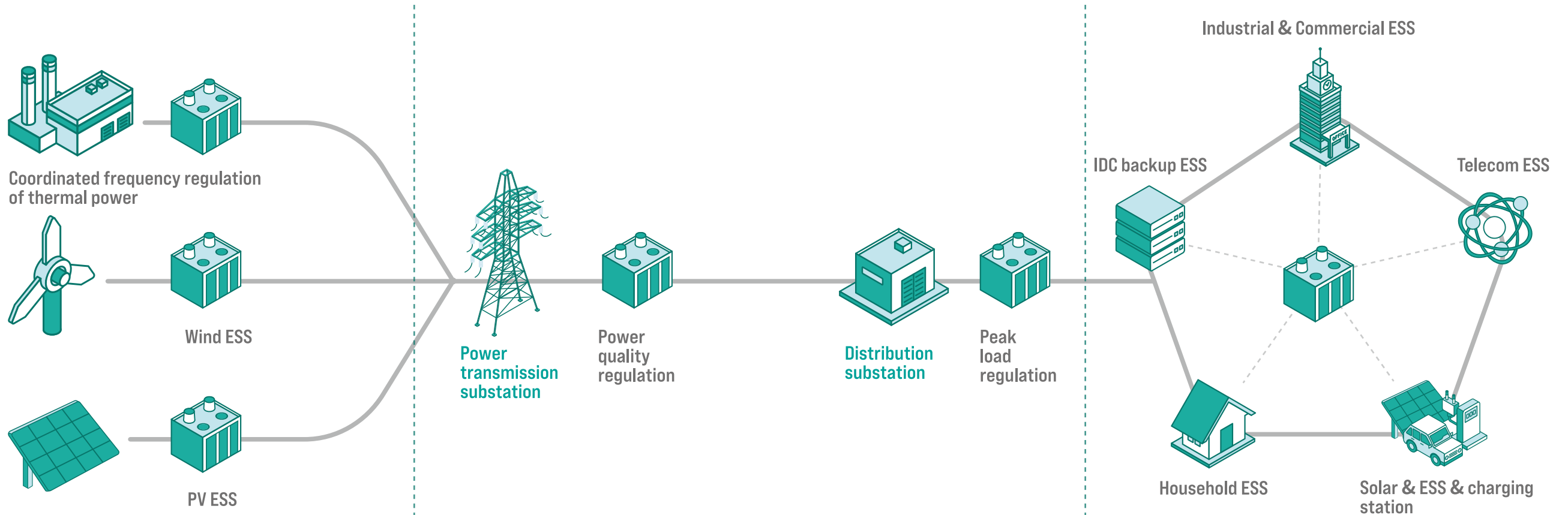
Advanced Manufacturing Technology

EVE continues to promote process technology innovation, using robot assistance, automatic detection, MES system, image recognition, artificial intelligence to achieve the automation, information and intelligence of the whole process, and build a national intelligent manufacturing demonstration factory.

BUSINESS
LAYOUT



ESS Application Scenarios



Generation side ESS

- Peak and frequency regulation (traditional generation side)
- To balance the fluctuation of new energy and increase the consumption of new energy
- Increase grid backup capacity

Revenue model:

Reduce assessment and increase compensation;
 Reduce the price loss of abandoned wind and PV;
 Participate in grid frequency regulation, gain frequency regulation compensation;
 Get more power generation revenue from priority dispatch.

Transmission & distribution side ESS

- Improve quality of energy
- Frequency regulation
- Increase grid backup capacity
- Delay transformer capacity expansion

Revenue model:

Utilize frequency and peak regulation functions to participate in grid services and improve grid stability for revenue.

Consumer side ESS

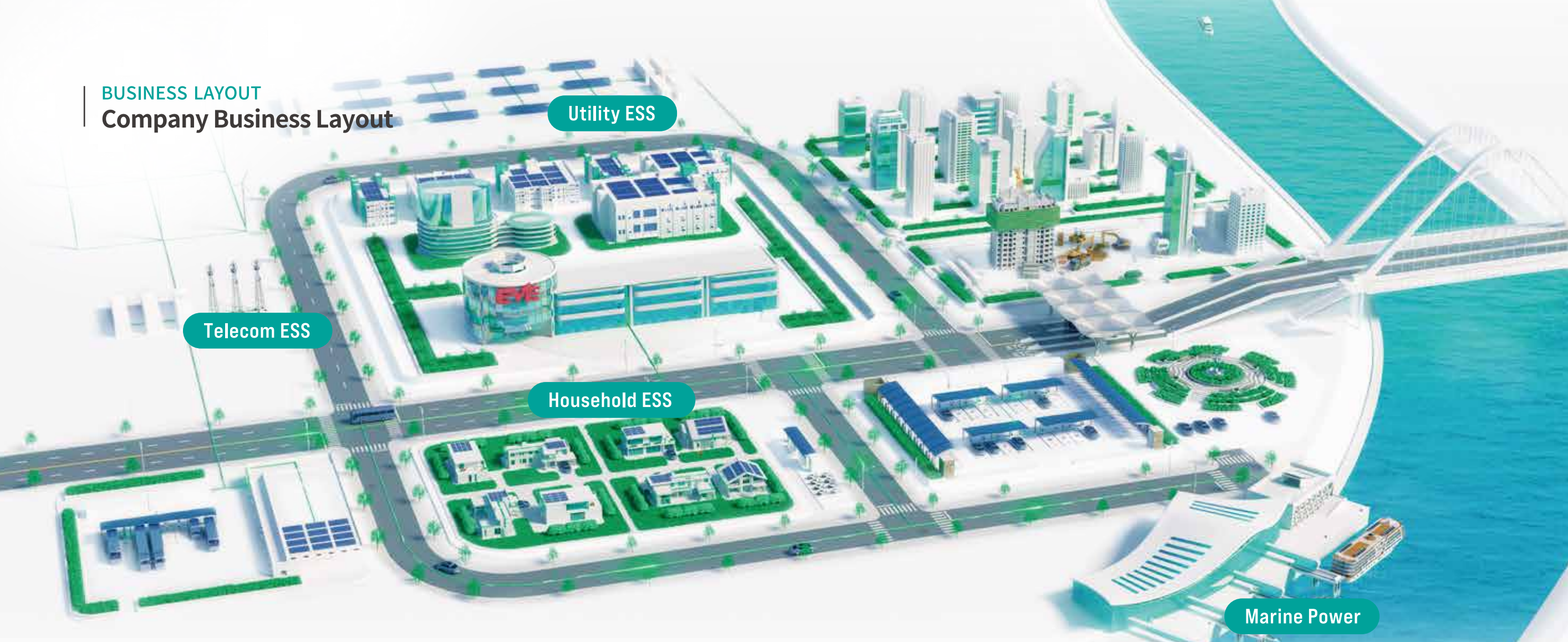
- Distributed energy consumption
- Peak load shifting, load transfer
- Solar & ESS & charging integration
- Backup power

Revenue model:

Peak-valley spread arbitrage;
 Power demand response subsidies;
 Control the demands to reduce or mitigate grid expansion costs;
 Backup power to improve reliability and reduce outage losses, while reducing traditional emergency backup investments.

BUSINESS LAYOUT

Company Business Layout

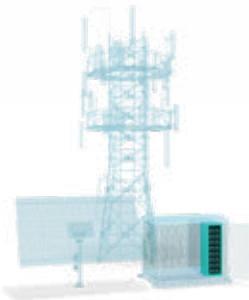


BUILDING AN ENERGY STORAGE LITHIUM PLATFORM TO HELP ACHIEVE CARBON NEUTRALITY



Utility ESS

Provide high safety and economic grid ESS solutions in all scenarios of generation side, transmission & distribution side and consumer side.



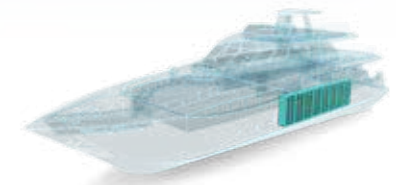
Telecom ESS

We provide comprehensive product solutions for multiple application scenarios such as telecom base station backup battery pack and data center backup battery pack, providing safe and reliable telecom ESS solutions.



Household ESS

Based on the application scenario of Household ESS, we provide a long-cycle, high-safety, modular ESS products, enabling green energy to enter ordinary households and opening a new zero-carbon era.



Marine Power

We provide safe, reliable and environmentally friendly electric customized solutions for ships. The products have passed the certification of China Classification Society (CCS), covering all types of ships in the market, helping green ecological water transport and leading the development of electric ships.

CELL

- Prismatic LFP Cell
- Cylindrical Cell



SYSTEM

- Widely adapted to all models,diverse group options
- Lightweight and high-strength to meet the needs of users
- Active thermal control technology,stronger independent adaptation
- Active isolation protective,better safety performance



MODULE

- Safe and stable, reliable and efficient
- Integrated liquid cooling, ultra-long life
- Efficient grouping, double battery life
- Multiple fire-fight protection, absolute safety



Battery Management System

- Meet the needs of international mainstream customers
- Comply with GB/T-34131 standard
- Model-based application layer software development
- Full coverage of product functional performance testing



A LEADING TECHNOLOGY
AND COMPREHENSIVE COST ADVANTAGE
OF THE BATTERY PLATFORM
TO SERVE
THE GLOBAL ENERGY STORAGE
MARKET.



Prismatic LFP Cell



Product Features

High Consistency

We can ensure the consistency of batteries through dark factories, smart factories, highly automated production lines and high precision equipment.

High Safety

It has more than 2856 cells production in charge and traceability system with a perfect design process and testing system. Obtained GB, CE, IEC, UL and other certifications.

Strong Performance

Low internal resistance, high discharging rate, stable charging and discharging, long cycle life.

Product Parameters

Item	Specification									
Cell Model	LF50F	LF72K	LF90K	LF100F	LF100MA	LF100LA	LF105	LF230	LF280K	LF304
Capacity/Ah	50	72	90	100	100	100	105	230	280	304
Dimension (DxWxH)/mm	26 x148 x129	36 x160 x142	36 x130 x200	36 x130 x200	50 x160 x118	50 x160 x118	36 x130 x200	53 x173 x207	72 x173 x207	71 x173 x207
Energy density Wh/kg	155	134	144	166	167	162	170	180	165	180
Application Scenarios	Telecom ESS	IDC backup ESS	Utility ESS Marine Power	Telecom ESS	Telecom ESS	Telecom ESS Household ESS	Telecom ESS Household ESS Marine Power	Marine Power	Utility ESS Marine Power	Marine Power

Note: The above data are from EVE Laboratory

Cylindrical Cell



Product Features

High Energy

Energy density up to 174Wh/kg, reduce product size and weight, easy installation and improve space utilization.

Safety and Reliability

It has more than 2856 cells production in charge and traceability system with a perfect design process and testing system. Obtained UL1642,UL1973,UL9540A,UN38.3 certifications, can meet the -20~60 °C high and low temperature discharge conditions.

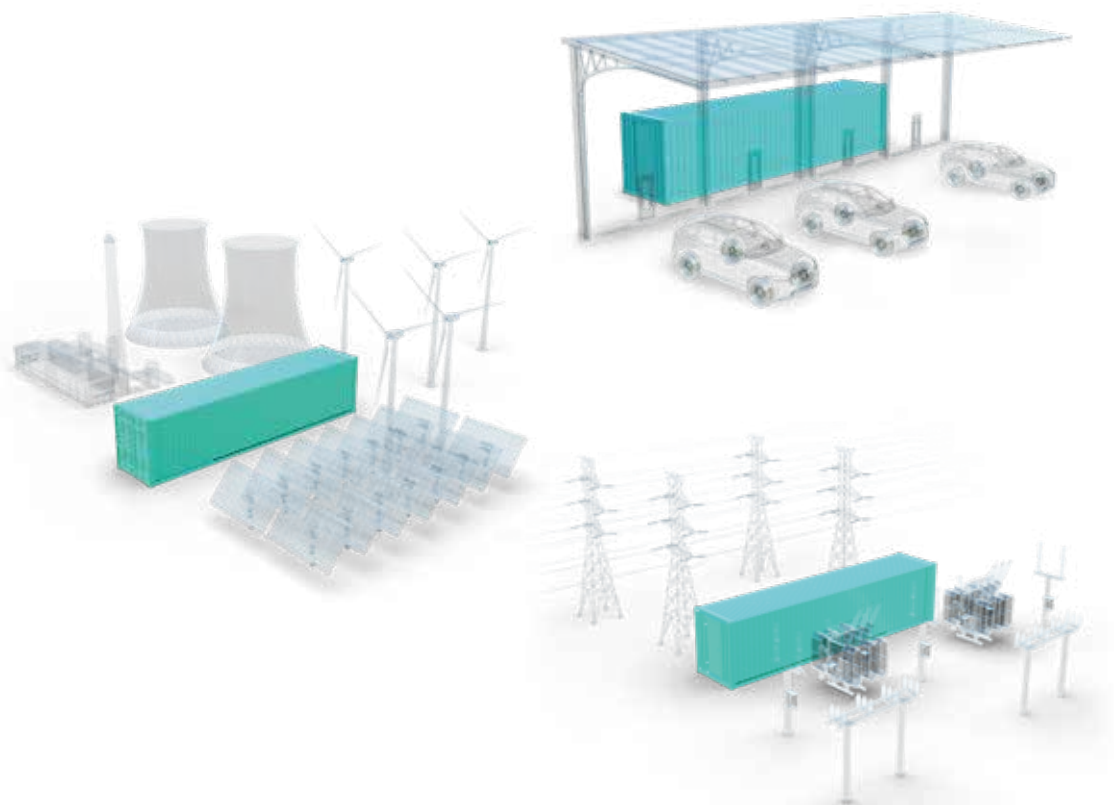
Strong Performance

Support maximum continuous discharge rate of 3C , support up to 20A charging, to meet the market demand for long service life.

Product Parameters

Item	Specification
Cell Model	C40
Nominal Capacity/Ah	20
Dimension/mm	φ=40.5 H=135.0
Energy Density Wh/kg	175
Application Scenarios	Household ESS, Convenient ESS

Note: The above data are from EVE Laboratory



Utility ESS

High Safety

Heavy security is shown from the four level of prevention, protection, elimination and leakage, which provide a full range of security for customers.

Full Scenario

Product solutions cover application needs of power generation side, grid side, consumer side. It can provide a full set of energy storage products for various extreme environments such as extreme cold and high altitude, rainy, desert, coastal area, etc.

High Life Cycle Discharge

Equipped with LF280K, a long-cycle EVE ESS product.

High Charging and Discharging Efficiency

EVE advanced energy storage LF280K can reach 95.01% charging and discharging efficiency at 25°C/0.5P, reducing auxiliary power consumption and customer operating costs.

MODULE



Product Parameters

Item	Specification		
	BP-32-51.2/180-F	BP-15-48/280-F	BP-48-153.6/280-L
Pack Model	BP-32-51.2/180-F	BP-15-48/280-F	BP-48-153.6/280-L
Cell Model	LF90K	LF280K	LF280K
Nominal Capacity/Ah	180	280	280
Rated Energy/kWh	9.2	13.44	43
Group configuration	2P16S	1P15S	1P48S
Rated Voltage/V	51.2	48	153.6
Voltage Range/V	44.8~57.6	42~54	134.4~172.8
Standard Charging and Discharging Rate	≤0.5P	≤0.5P	≤0.5P
Max. Charging and Discharge Rate	≤1P	≤0.5P	≤0.5P
Charging Operating Temperature/°C	0~50		
Discharging Operating Temperature/°C	-20~50		
Dimension(D×W×H)/mm	625×465×260	647×510×240	1067×858×240
Weight/kg	~92	~105	~300
Level of Protection	IP20		IP67
Thermal management	Air forced cooling		Liquid cooling
Certification	GB/T-36276,UN 38.3	GB/T-36276,UN 38.3	GB/T-36276,UL1973 UL9540A,UN 38.3

Note: The above data are from EVE Laboratory

RACK

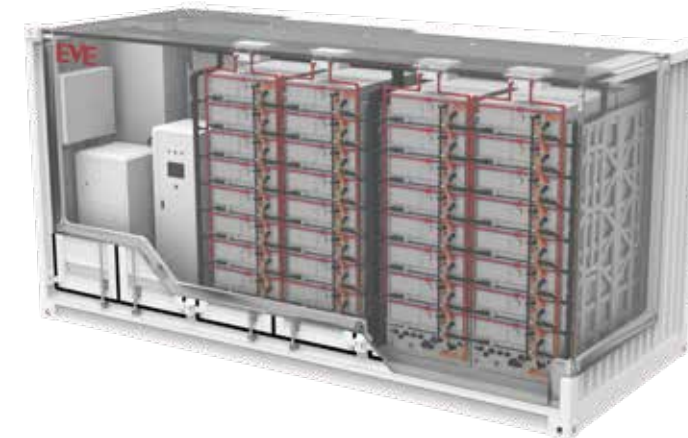


Product Parameters

Item	Specification		
Pack Model	BR-15-768/180-F	BR-15-720/280-F	BR-8-1228.8/280-L
Cell Model	LF90K	LF280K	LF280K
Nominal Capacity /Ah	180	280	280
Rated Energy/kWh	138.2	201.6	344.1
Group configuration	2P240S	1P225S	1P384S
Rated Voltage/V	768	720	1228.8
Voltage Rang/V	672~864	630~810	1075.2~1382.4
Standard Charging and Discharging Rate	≤0.5P	≤0.5P	≤0.5P
Max. Charging and Discharging Rate	≤1P	≤0.5P	≤0.5P
Charging Operating Temperature/°C	0~50		
Discharging Operating Temperature/°C	-20~50		
Relative Humidity	5~95% (without condensation)		
Dimension(D×W×H)/mm	665×990×2440	655×1170×2240	1074×862×2374
Weight/kg	~1600	~1800	~2700
Level of Protection	IP20		IP54
Thermal Management	Air forced cooling		Liquid cooling
Certification	/	GB/T-36276	GB/T-36276,UL1973 IEC62619

Note: The above data are from EVE Laboratory

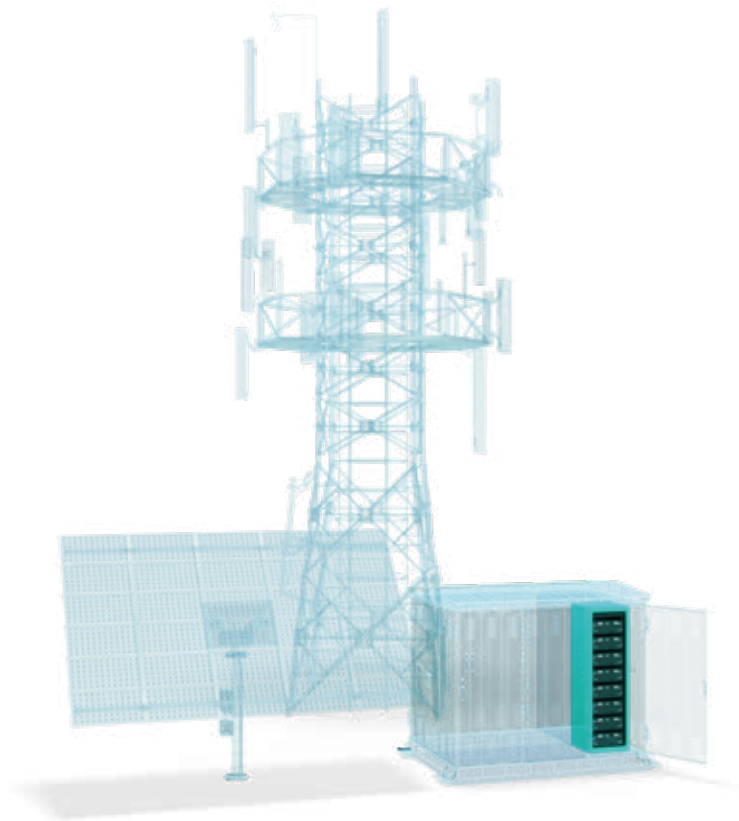
SYSTEM



Product Parameters

Item	Specification				Specification
System Model	ESS-1100/1100	ESS-800/1600	ESS-2200/2200	ESS-1600/3200	ESS-1500/3000
Cell Model	LF90K	LF280K	LF90K	LF280K	LF280K
System Configuration	16P240S	8P225S	32P240S	16P225S	9P384S
Rated Energy/kWh	1105	1612	2211	3225	3096
Voltage Rang /V	672~864	630~810	672~864	630~810	1075.2~1382.4
Standard Charging and Discharging Rate	≤0.5P	≤0.5P	≤0.5P	≤0.5P	≤0.5P
Max. Charging and Discharging Rate	≤1P	≤0.5P	≤1P	≤0.5P	≤0.5P
BMS Communication	CAN,RS485,LAN				CAN,RS485,LAN
Thermal Management	Air Forced Cooling				liquid cooling
Dimension(D×W×H)/mm	20 feet: 2438×6058×2896		40 feet: 2438×12192×2896		20 feet: 2438×6058×2896
Weight /t	25	30	40	50	<35
Recommended Environmental Temperature /°C	-20~50				-20~50
Relative Humidity	5~95% (without condensation)				5~95% (without condensation)
Level of Protection	IP55				IP55
Fire Protection System	HFC-227ea fire Protection System				PERFLUORO + Immersion Fire Fighting System

Note: The above data are from EVE Laboratory



Telecom ESS

High Safety and Reliability

The product adopts high safety LFP cell and more than 2856 cells production in charge and traceability system with a perfect design process and testing system. It meets the standard of YDT 2344.1 2011 in the Telecom industry, and has passed the certification of TLC, IEC62619, CE, UN38.3 The system has nine-level earthquake resistance, providing reliable power supply for customers.

High Energy Density

The energy density of lithium battery is about 3-4 times that of lead-acid battery, and it can save about 67% of occupied space and lower load-bearing requirement under the same power backup time requirement. Lightweight design and miniaturized products reduce land costs and installation and maintenance difficulties.

Intelligent Management

Adopting BMS intelligent management system, real-time monitor of battery status and intelligent balance control to achieve multi-dimensional intelligent battery management. The efficient operation is more worry-free.

Long Cycle

High cycle times.

PACK



Product Parameters

Item	Specification					
Product Model	EVE4850	EVE48100(V1)	EVE48100(V2)	EVE48100	EVE48150	EVE48200
Cell Model	LF50F	LF100MA	LF100LA	LF105	LF50F	LF105
Rated Capacity/Ah	50	100	100	100	150	200
Rated Energy/kWh	2.4	4.8	4.8	4.8	7.2	9.6
Rated voltage/V	48					
Dimension(D×W×H)/mm	396×442×88.5	410×442×130.5		410×442×177.5	555×442×160	500×442×220
Height	2U	3U		4U	3.6U	5U
Weight/kg	22	39.8	41	44	62	72
Standard Charging /Discharging Rate	0.2C					
Max. Charging /Discharging Rate	1C					0.75C
Operating Voltage Range/V	40.5~54.75					
Charging Operating Temperature/°C	0~55					
Discharging Operating Temperature/°C	-20~55					
ACR /mΩ	≤30	≤20		≤30	≤20	
Certification	TLC/UN38.3 IEC62619/CE	UN38.3 Designed to meet IEC62619/CE/UL1973 standards		TLC/UN38.3 IEC62619/CE	UN38.3 Designed to meet IEC62619/CE standards	

Note: The above data are from EVE Laboratory

SMART LITHIUM BATTERY



Product Features

- Long Cycle Life & Long Floating Charge Life
- Mixed Use of Lead-aid and Lithium Batteries
- Intelligent Regulation of Output Voltage
- Full Working Condition Application

Product Parameters

Item	Specification
Cell Model	EVE-TES-48V-100
Rated Capacity/Ah	100
Cell Model	LF100MA/LF100LA
Rated Voltage/V	48
Height	3U
Standard Charging/Discharging Rate	0.5C
Max. Charging/Discharging Rate	1C
Operating Voltage Range/V	44~57
Charging Operating Temperature/°C	0~55
Discharging Operating Temperature/°C	-20~55
Dimension(D×W×H)/mm	444×442×130.5
Certification	Designed to meet UN38.3/IEC62619/CE
Weight/kg	42

Note: The above data are from EVE Laboratory

THE INTEGRATION OF IDC BACK-UP POWER

Product Features

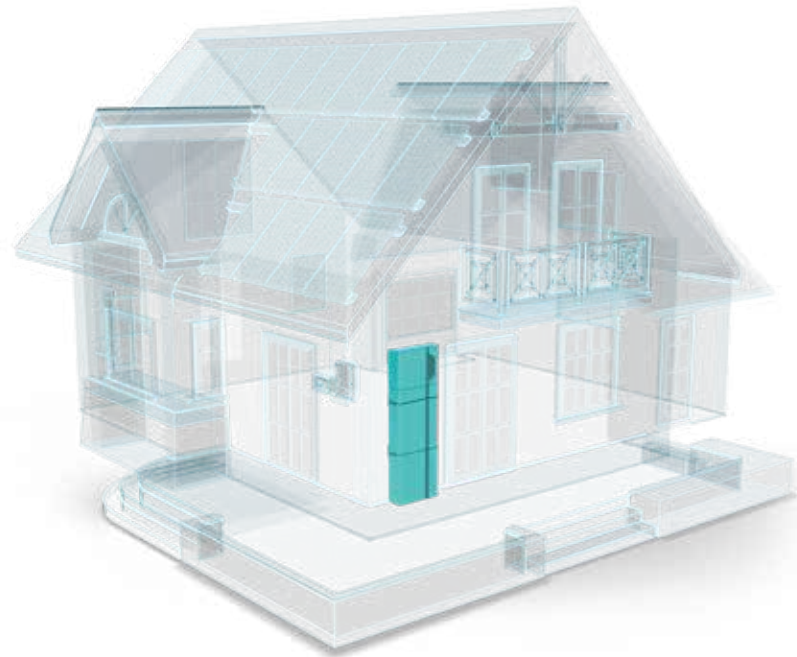
- High rate discharge
- Data center standard rack size design
- Ultra-long floating charge life
- Standard module pack, easy convenient maintenance
- Select in-box fire hydrant, safety and reliability
- High energy density, small floor area, lower whole-life cost
- Lower room weighing requirements and greater site suitability than lead-acid batteries
- Three-stage BMS architecture for detecting lithium battery systems



Product Parameters

Item	Specification	
	LF50K	LF72K
Cell Model	LF50K	LF72K
System Configuration	1P160S	
Rated Voltage/V	512	
Nominal Capacity/Ah	50	72
Rated Energy/kWh	25.6	36.8
Backup time/min	30	10
Standard Charging and Discharging Rate	1C	
Max. Discharging Rate	2C	6C
BMS Communication	CAN,RS485	
Operating Voltage range/V	448~584	
Charging Operating Temperature/°C	0~55	0~65
Discharging Operating Temperature/°C	-20~55	-20~65
Level of Protection	IP20	
Thermal Management	Air cooling	Natural heat dissipation
Fire Protection	-	In-box Fire Hydrant
Dimension(D×W×H)/mm	600×600×2000	

Note: The above data are from EVE Laboratory



Household ESS

Long Cycle

The product is equipped with EVE household ESS cell of long cycle type.

Safety and Reliability

Pack-level aerosol and fire protection design; secondary pressure relief valve design, such as battery cell explosion-proof valve, battery pack explosion-proof venting valve.

Pack-level fuse and high-voltage box fuse, I²Rt matching, fast hierarchical protection.

Easy Maintenance and Installation, Strong Flexibility

Fast installation and removal without tools; BMS automatically identifies codes for more efficient and secure commissioning; Stackable installation design can be freely matched to meet the different demand for electricity; Standard MODBUS&CAN communication protocol, compatible with many mainstream inverters on the market.

SYSTEM

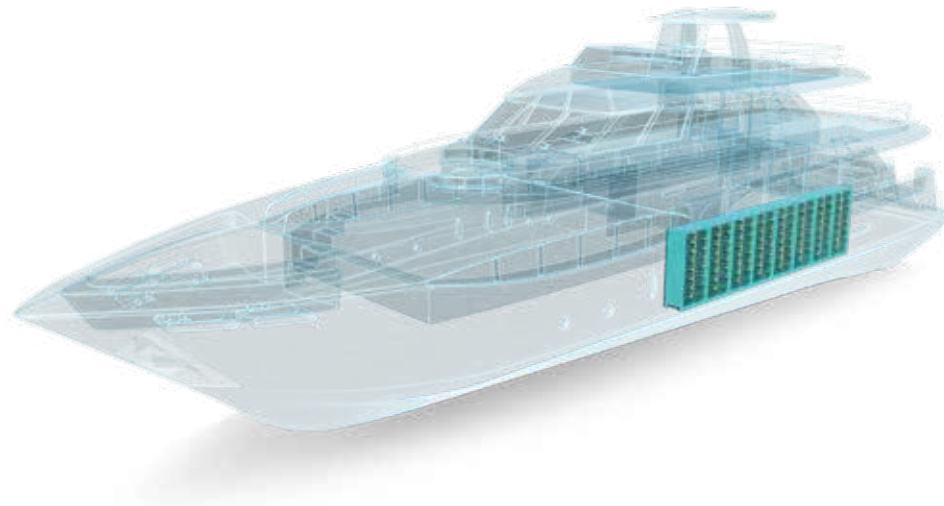


Product Parameters

Item	Specification			
Product Model	EVE-LVI-25.0	EVE-LVS-16.0	EVE-HVS-12.0S	EVE-HVS-16.0M
Battery Pack	5.12kWh 51.2V100Ah (about 39kg)	4kWh 52V80Ah (about 39kg)	4kWh 104V40Ah (about 35kg)	4kWh 104V40Ah (about 35kg)
Number of System Pack	5	4	3	4
System Energy/ kWh	25.6	16.64	12.48	16.64
Weight/kg	230	150	125	160
Dimension(D×W×H)/mm	600×600×1000	380×620×875	200×620×1500	380×620×1040
Max. Continuous Discharge Current/A	100	120	40	40
Rated Voltage/V	51.2	51.2	307.2	409.6
Telecom Communication	RS485*2/CAN*2	RS485*2/CAN*2	RS485*2/CAN*2	RS485*2/CAN*2
Charging Operating Temperature/°C	0~55	0~55	0~55	0~55
Discharging Operating Temperature/°C	-20~55	-20~55	-20~55	-20~55
Level of Protection	IP20	IP65	IP65	IP65
Cycle Life	≥5000@25°C	≥3500@25°C	≥3500@25°C	≥3500@25°C
System Scalable Range/kWh	5.12~76.8	4~61.44	4~32.76	4~49.14
Certification	Designed to meet UN38.3 / IEC62619 / UL1973 / CE certification standards			

Note: The above data are from EVE Laboratory

PACK



Marine Power

Safety and Reliability

Adopting high safety LFP cells, pack IP67 level protection, BMS safety redundancy design, system built-in water-cooled units and fire protection, the product meets the requirements of CCS safety certification.

Long Lifespan

The product is equipped with LF280K, a long-cycle type product for energy storage.

Full Working Condition Application

Marine ESS products have been successfully applied to various types of ships (such as mixed passenger and cargo vessels, container ships, tugboats, passenger ships, chemical ships, cruise ships, marine boats). The product has the installation and application experience in different water conditions that can satisfy the installation needs of different working conditions.

Customized Services

A variety of energy/voltage battery systems can be configured according to operating conditions, providing customized solutions to meet the diverse needs of customers, with a market share of over 50%.

The Five-star After-sales

2 hours quick response, 24 hours timely maintenance, after-sales more carefree.

Product Parameters

Item	Specification			
Thermal Management	Natural heat dissipation	Natural heat dissipation	Natural heat dissipation	Liquid cooling/Natural heat dissipation
Product Model	EVE-B3-2P18S-11	EVE-B3-3P12S-11	EVE-B2-1P12S-12	EVE-B2-1P18S-11/12
Cell	LF105(CCS certification)	LF105(CCS certification)	LF280K(CCS certification)	LF280K(CCS certification)
Composition	2P18S	3P12S	1P12S	1P18S
Nominal Capacity/Ah	210	315	280	280
Rated Voltage/V	57.6	38.4	38.4	57.6
Voltage Rang/V	52.2~63	34.8~42	34.8~42	52.2~63
Rated Energy/kWh	12.09	12.09	10.75	16.12
Max. Continuous Charging /Discharging Rate	0.5C/0.5C	0.5C/0.5C	0.5C/0.5C	1C/1C (Liquid cooling) 0.5C/0.5C (Natural cooling)
Weight/kg	100±10	100±10	83±5	118±10
Energy Density Wh/kg	121	121	129	136.6
Dimension(DxWxH)/mm	649x517x221	649x517x221	630x440x240	896x426x 242
Cycle Life	≥3000@25°C	≥3000@25°C	≥4500@25°C	≥4500@25°C
Level of Protection	IP67			
BMS	Compliance with CCS standards			
Operation Temperature/°C	Charging 0~55 / Discharging -20~55			
ACR/MΩ	> 550(1000VDC)			

Note: The above data are from EVE Laboratory

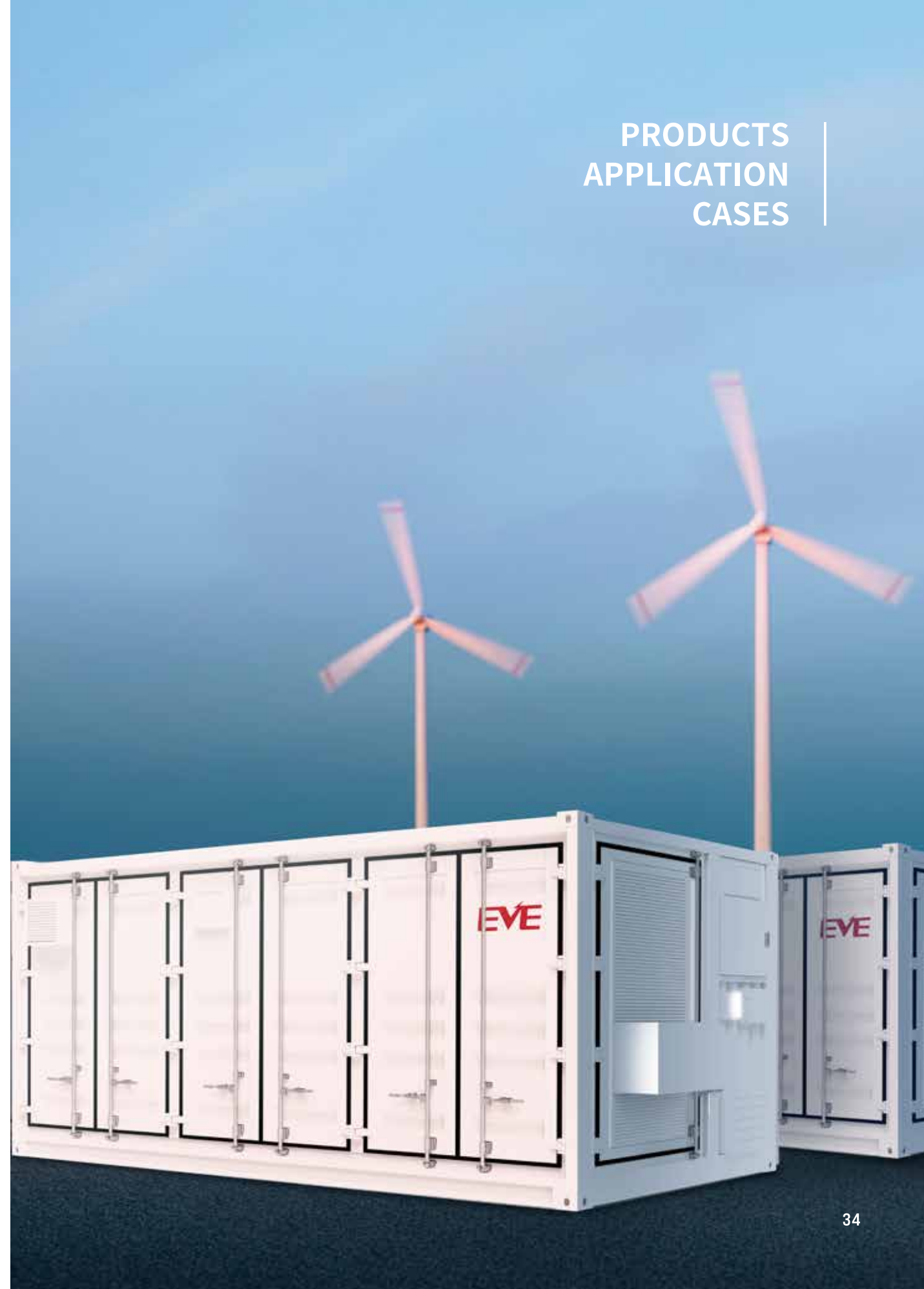
MARINE CONTAINER ENERGY SYSTEM



Product Parameters

Item	Specification
Cell model	EVE C-power V1.0
System Configuration	8P270S
Nominal Energy/kWh	≤2000
Rated Voltage/V	864
Voltage Range/V	783~945
Max. Charging and Discharging Rate/A	750
BMS Communication	CAN、RS485、LAN
Thermal Management	Liquid Cooling
Dimension(D×W×H)/mm	20 feet standard container: 2438×6058×2591
Weight/t	<26
Recommended Charging Operating Temperature/ °C	0~55
Recommended Discharging Operating Temperature/ °C	-20~55
Relative humidity	5~ 95 % (without condensation)
Fire protection system	HFC-227ea fire Protection System
Certification	CCS

Note: The above data are from EVE Laboratory



PRODUCT APPLICATION CASES
Utility ESS



Utility ESS · Power generation side

High Voltage 96MWh Power Supply Distribution Project for the Base in Hainan State, Qinghai Province

Project Scale: 73MW/96MWh

Project Application: New Energy Facilities



Utility ESS · Power generation side

4MW/8MWh PV Energy Storage Project in California, USA

Project Scale: 4MW/8MWh

Project Application: Auxiliary photovoltaic consumption and power quality regulation

PRODUCT APPLICATION CASES
Utility ESS



Utility ESS · Transmission & Distribution side

Henan Power Grid 100MW Battery Energy Storage Demonstration Project

Project Scale: 9.6MW/9.6MWh

Project Application: Peak and frequency regulation



Utility ESS · Transmission & Distribution side

12MWh ESS Frequency Regulation Project in Maoming, Guangdong Province

Project Scale: 20MW/12MWh

Project Application: AGC thermal power combined with 2C multiplier frequency regulation function



Utility ESS · Consumer side

20MWh Distributed Energy Storage Project in Yan Jing Shen Industrial Park, Jiangsu Province

Project Scale: 5MW/20MWh

Project Application: Peak load shifting



Utility ESS · Consumer side

Huaneng 180MWh Project in Bayannuorigong, Inner Mongolia;

Project Scale: 90 MW/180 MWh

Project application : Wind & Power generation facilities

PRODUCT APPLICATION CASES
Telecom ESS, Household ESS



Telecom ESS

China Mobile 558.3MWh Telecom Power Backup Project

System scale: 558.3MWh in total
 Project Application : Telecom ESS

Household ESS

Development of SMILE5-BAT with Alphaess

Type of supply : Cells
 Project Application : Household ESS

Development of eFlex 5.4kWh LFP Battery with FP

Type of supply : Pack
 Project Application : Household ESS



PRODUCT APPLICATION CASES
Marine Power



Marine Power

Wuhan Yangtze River Passenger Ferry "Jun Travel"

Battery Power: 2240 kWh
 Passenger Capacity: 300



Marine Power

"Dongxing 100" 1600 Tons Pure Electric Coal Carrier

Battery Power : 3400 kWh
 Electric Duration : 270 km



Marine Power

"Yungang Diantuo Yi Hao" Pure Electric Tugboat

Battery Power : 5000 kWh
 China's First Purely Electric Tugboat



Marine Power

"Chuanlian No.1" Hybrid Conversion Bulk Carrier

Battery Energy : 2128kWh (2 sets of 20 feet container energy supply)
 Electric Duration : 65km



Medical Industry ESS

**Kangda Intercontinental
60kW/90.112kWh Project**

Project Scale: 1.44MWh



Solar & ESS & Charging station

**Gao Ming Haineng Technology Co., Ltd.
500kW/2MWh Project**

Project Scale: 4MWh



Industrial Park ESS

**The second phase of 500kWh/2MWh
project of Jinshiyuan Wine Co., Ltd.**

Project Scale: 4MWh



Island Microgrid ES

BESS-2064kWh Container ESS

Project Scale: 2MWh



Photovoltaic supporting facilities

Saudi Arabia Red Sea New City 4MW/15.33MWh Project

Project Scale: 15.33MWh

PRODUCT APPLICATION CASES

The Integration of IDC Backup Power



The Integration of IDC Backup Power

EVE Tong Lake Machine Room and Core Workshop Power Backup

Project Power : 3.24MWh

Delivery interface : DC-side battery systems

Application Scenario : Data Center Power Backup+Core Workshop Equipment System Power Backup

Backup Power Duration : 1h

EVE